

# PADDLE, PACK AND NEVER LOOK BACK ON THE COURT OR ANY SPORT

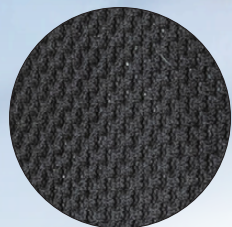


Was ~~\$11.25~~  
**\$9.95**  
(C)  
100 pcs +

## #979 "DRIFTER" RECYCLED CROSSBODY PICKLEBALL & SPORTS GEAR SLING BAG

35	75	150	250	500+
<del>11.00</del>	<del>10.65</del>	<del>10.35</del>	<del>10.15</del>	<del>9.95</del> (C)
<b>9.95</b>	<b>9.75</b>	<b>9.50</b>	<b>9.25</b>	<b>8.95</b> (C)

**Size:** 11" W x 18" H x 3 1/4" W;  
**Main Pocket** – 12.5" W x 17.5" H x 3" D;  
**Front Pocket** - 11" W x 13.5" H x 2.5" D  
**Imprint Area:** 8" x 8" on Front Pocket



Padded Mesh Back Panel  
and Strap for  
Comfortable Carry



Bottom Side Loops for  
Carrying on Right  
or Left Shoulder



Content Not  
Included.



Main Compartment Holds Two Pickleball  
Paddles and Other Sports Gear with a  
Spacious Front Pocket.  
Content Not Included.



Crafted from durable 600D recycled polyester (RPET), this sports crossbody sling backpack bag is built with an oversized main compartment with an internal sleeve that holds up to two pickleball paddles, plus room for up to 20 pickleballs or other sports gear. The extra-large secondary zippered pocket can hold snacks, phones, wallets, keys, and other necessities. It also features a padded breathable mesh back panel and strap, padded bottom, bottom side loops for right or left shoulder carry, a mesh water bottle pocket, designer zipper pulls, a top carry loop, and built-in fence hook to make this an all-in-one courtside essential. The extra-large 8" x 8" imprint area includes **up to a full color imprint with no extra charges for additional colors!**

**Setup Charge:** 60.00 (G), regardless of number of colors. **Price Includes:** Up to a full color imprint on the front panel (exact color matches are not possible). **Email Proof Charge:** 7.50 (G), add 2 days to production time. **Repeat Setup Charge:** 32.50 (G). **Production Time:** 5 Days up to 250 pcs; 7 Days for 250+. **Packaging:** Bulk. **Material:** 600D Recycled Polyester (RPET). Back panel and strap 600D Polyester. **Weight:** 26 lbs./50 pcs. (EQP & NQP do not apply sorry no exceptions).

Specify Promo **#E5275** to receive special pricing at time of order placement as it cannot be applied later. This offer may not be combined with any other promotion, discount, coupon and/or special column pricing. Expires 8/31/2026

Disclaimer: Small shifting of imprint cannot be avoided when printing. As each product is manufactured and printed individually, up to 3/16" movement in logo alignment may occur. Products are intended for individual use and cannot be compared one to another. Product material thickness, size and color as well as ink color will vary slightly from product to product and order to order and dye lot to dye lot, current order cannot match previous order. PMS colors will be very close, however inks are mixed by hand with some variation and cannot be compared to e proofs. Copy Change request must meet 1/2 of the first column quantity. No exceptions. All applicable charges will be applied. 0522U-0331