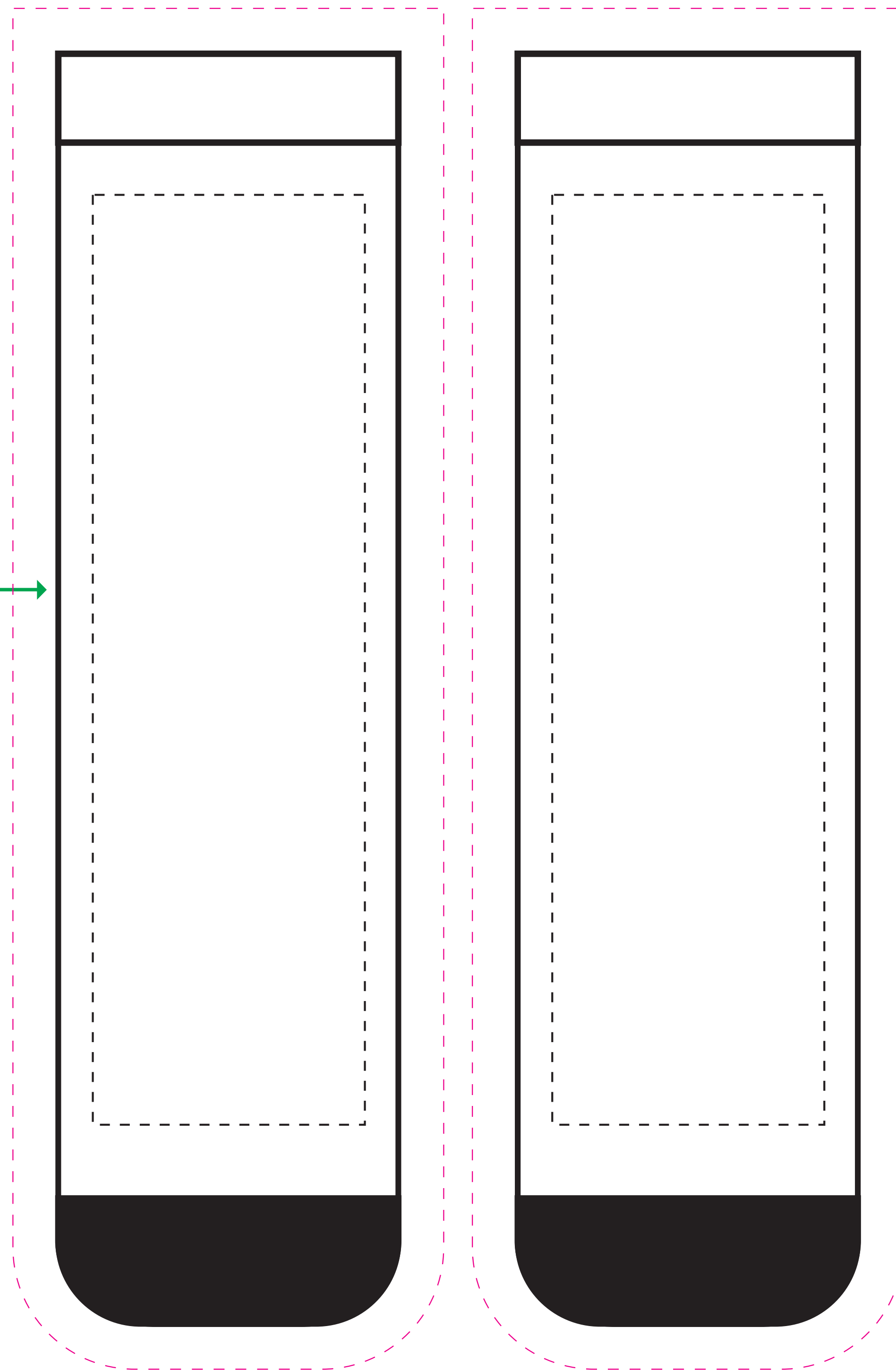


**ITEM# SOCK12-M (Men's)**

**Full Color Sublimation**

**TOP**

**BOTTOM**



Important text and logos should be placed within the dashed line "safe areas" to avoid your artwork being cut off by the toe or edges of the sock

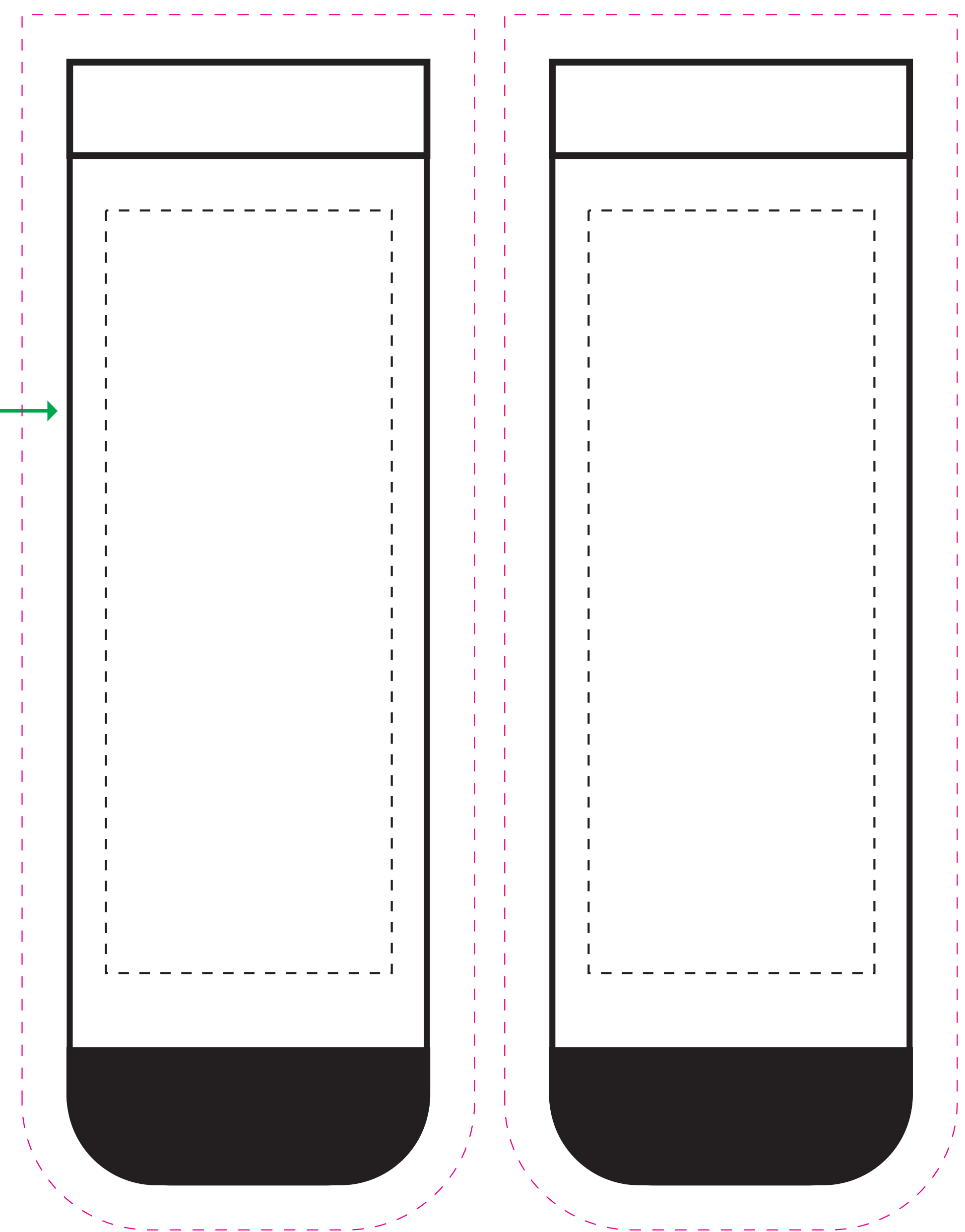
**Sock Size: 3.75" x 14"**  
**Full Bleed Imprint Size: 4.75" x 15"**

**ITEM# SOCK12-W (Women's)**

**Full Color Sublimation**

**TOP**

**BOTTOM**



Important text and logos should be placed within the dashed line "safe areas" to avoid your artwork being cut off by the toe or edges of the sock

**Sock Size: 3.75" x 11.75"**  
**Full Bleed Imprint Size: 4.75" x 12.75"**

Due to the nature of our sock printing process, your artwork will not be continuous across the front and back imprints, which are printed separately. All full bleeds will have a break line where the front and back imprints meet. Creases in the fabric cannot be avoided. Creases could prevent color or imprint from printing inside the small fabric crease, resulting in small white spaces where creases occur. We recommend keeping logos 1/2" away from product edges or creases. Credit will not be issued nor will returns be accepted for socks printed in this manner which cannot be avoided and is not considered a defect.