

# Touchless Sanitary Key

## Avoid Germs. Use This Instead of Your Hands in Public.



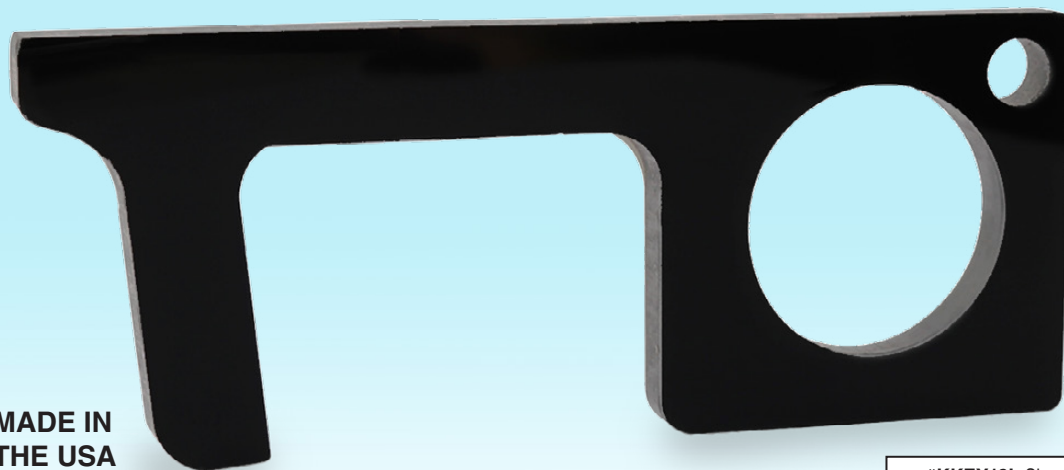
To Open Doors



To Push Elevators Buttons



Use at Keypads on ATM and Gas Stations



 **MADE IN THE USA**

Instruction Sheet  
Included in Polybag

We hope you enjoy your new **USA Made Touchless Sanitary Key**. It's made for all those often used germ surfaces you don't want to touch with your hands such as public pull or push doors and pressing elevator, ATM, gas pump, grocery check-out and other numeric keypads. There are literally dozens of uses.

For blank (without logo) Touchless Sanitary Keys, remove from polybag and peel off the protective paper liner on the front and back before use.



ASI 62660 SAGE 51749

### Item #KKEY19

#### Touchless Acrylic Sanitary Key - Black

##### Features:

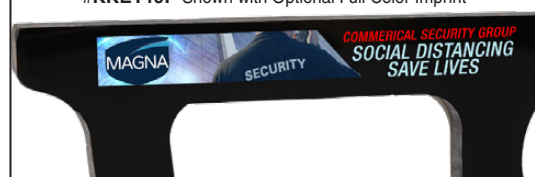
- Open Doors (maximum door weight 25lbs)
- Press Buttons or Keypads
- Open or Close Drawers
- Easily attaches to Keyring (split ring not included)
- Made In USA

100	250	500	1,000
2.75	2.69	2.49	2.29 (C)

#KKEY19L Shown with Optional Laser Engraving, No Color



#KKEY19P Shown with Optional Full Color Imprint\*



Above price is for **BLANK** Key only, no laser engraving.

For Laser Engraving (no color) as pictured, **specify #KKEY19L** and add: .75 (G) running charge, plus 55.00 (G) Setup Charge.

**Second Side Run Charge:** .75 (G) running charge, plus 55.00 (G) Setup Charge if different logo.

\*For A Full Color Logo **specify #KKEY19P** and add: .60 (G) running charge, plus 55.00 (G) Setup Charge. **Second Side Run Charge:** .60 (G) running charge, plus 55.00 (G) Setup Charge if different logo.

**Note:** If there is no color specified or no style specified we automatically laser artwork supplied. PAYMENT WITH ORDER - NO EXCEPTIONS.

**Repeat Setup Charge:** 27.50 (G). **Email Proof Charge:** 7.50 (G), add 2 days to production time. **Production Time:** Blanks - 10 days, Laser Engraved - 15 days, after all approvals. **Product Size:** 4" Length x 1 1/2" Height x 3/16" thick. **Laser Engraved/Full Color Imprint Area:** 2-1/4" W x 1/4" H. **Recommended Minimum Font Size:** 7pt. **Packaging:** Polybag/Bulk. Please note that black acrylic touchless key will have removable protective film when shipped blank. **Weight:** 6 lbs. 100 pcs.

This offer can not be combined with any other promotion, discount, coupon and/or special column pricing (EQP & NQP do not apply sorry no exceptions).

Absolute Minimum 100 pcs. Sorry, Limited Production - Maximum order 1000 pcs Per End User.

**Please note:** Small shifting of imprint cannot be avoided when imprinting or laser engraving. As each product is manufactured and printed individually, up to 3/16" movement in logo alignment may occur. Orders must be submitted with art and valid shipping address. (We cannot accept incomplete orders) Credit department will contact you for prepayment details, no exceptions. Due to limited production capacity, samples are not available **Promo #W4051**.