

# ITEM # WSCPT10 - Mobile Cell Phone Luggage Bag Tag

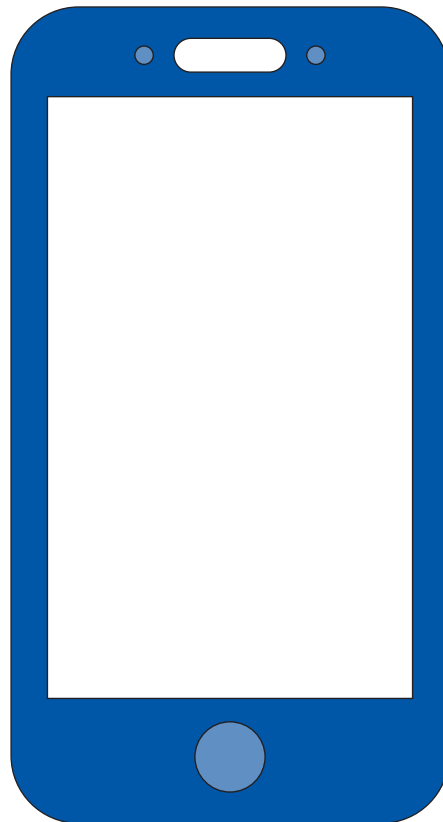
Available Color(s) : Blue  
Imprint Area Size : 2-1/4" H x 3-1/2" W  
Artwork Format(s) accepted : CMYK TIF 300 dpi (with 0.25" bleed)  
or Vector EPS (type outlined)  
Artwork Recommendations : No type smaller than 7 pt.

Industry standard allows  
1/16" movement in any direction

**Purchase Order #:**

4-color process

\* Template Shown at 100%  
Border Does Not Print



Imprint Area

NOT TO SIZE. FOR PLACEMENT ONLY

**ART NOTES:**

# ITEM # WSCPT10 - Mobile Cell Phone Luggage Bag Tag

Available Color(s) : Red

Imprint Area Size : 2-1/4" H x 3-1/2" W

Artwork Format(s) accepted : CMYK TIF 300 dpi (with 0.25" bleed)  
or Vector EPS (type outlined)

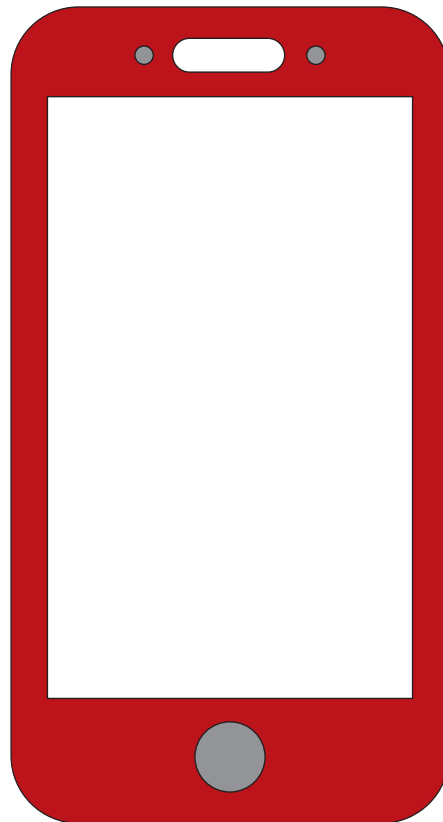
Artwork Recommendations : No type smaller than 7 pt.

Industry standard allows  
1/16" movement in any direction

**Purchase Order #:**

4-color process

\* Template Shown at 100%  
Border Does Not Print



Imprint Area

NOT TO SIZE. FOR PLACEMENT ONLY

**ART NOTES:**

# ITEM # WSCPT10 - Mobile Cell Phone Luggage Bag Tag

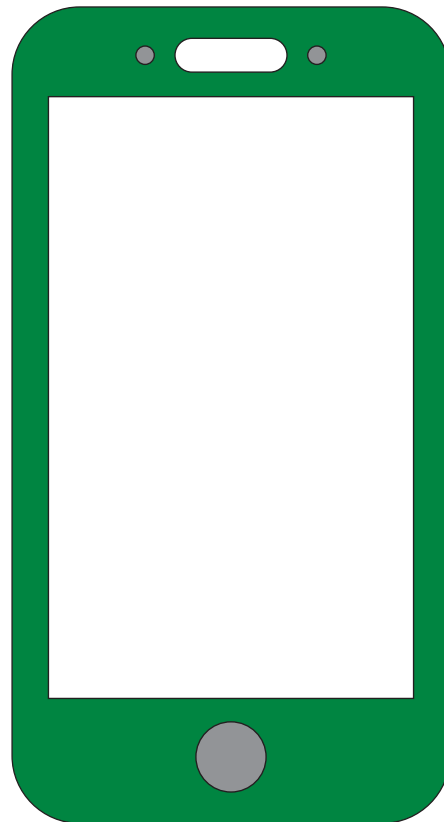
Available Color(s) : Green  
Imprint Area Size : 2-1/4" H x 3-1/2" W  
Artwork Format(s) accepted : CMYK TIF 300 dpi (with 0.25" bleed)  
or Vector EPS (type outlined)  
Artwork Recommendations : No type smaller than 7 pt.

Industry standard allows  
1/16" movement in any direction

**Purchase Order #:**

4-color process

\* Template Shown at 100%  
Border Does Not Print



Imprint Area

NOT TO SIZE. FOR PLACEMENT ONLY

**ART NOTES:**

# ITEM # WSCPT10 - Mobile Cell Phone Luggage Bag Tag

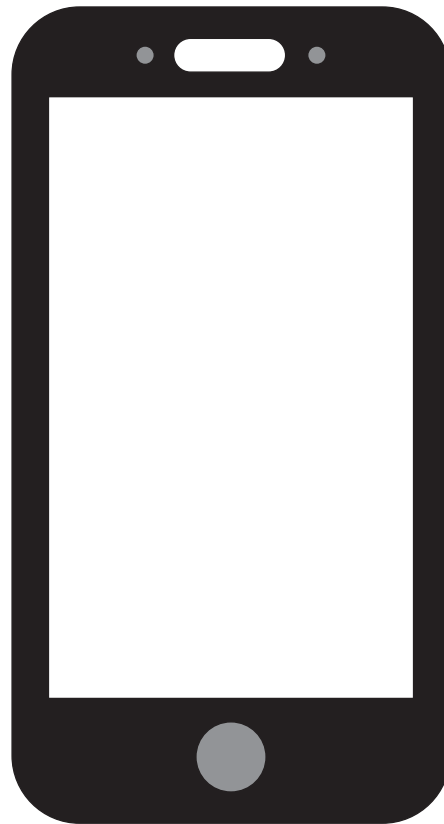
Available Color(s) : Black  
Imprint Area Size : 2-1/4" H x 3-1/2" W  
Artwork Format(s) accepted : CMYK TIF 300 dpi (with 0.25" bleed)  
or Vector EPS (type outlined)  
Artwork Recommendations : No type smaller than 7 pt.

Industry standard allows  
1/16" movement in any direction

**Purchase Order #:**

4-color process

\* Template Shown at 100%  
Border Does Not Print



Imprint Area

NOT TO SIZE. FOR PLACEMENT ONLY

**ART NOTES:**